

Action Plan 2023-2026

Version 1.0

This is a draft Environment Action plan agreed by the Planning & Environment Committee in June 2023 to be produced, and that it would be produced for further consultation. Please see Appendix for our pledge and raw data.

1. Managing the Town Council in an environmentally sustainable manner

We shall ensure that sustainability is at the heart of how we manage the Town Council and its functions.

No.	Action	How will we do this	Cost	Date required by	How will we measure this?	Responsible Committee	Progress to date
1.1	Consider options for renewable energy on the Town Council estate						
1.2	Look at fully renewable energy contract for the electric supply to the Town Council. Find our how 'Green' our current supplier is.	Produce report					
1.3	Review the waste created by the Town Council and consider options to increase	Identify waste disposal currently	Not yet known				
1.4	the amount recycled or reduce amount disposed. Do we have recycle bins in public areas? Kitchens?						

1.5	Review vehicle & equipment needs and where possible move to electric machines	Equipment asset list to be reviewed to consider options	Not yet known				
1.6	Make climate impact a determinant in some local grant giving.	Review certain grants for environmental impact	None?		Committee to agree criteria and scale		
1.7	Reports on data from https://impact-tool.org.uk/ 6 monthly or annually	To be decided on time span. Compare reports from previous	None		Committee to agree criteria and scale		

2. Managing our built environment sustainably

We are directly responsible for both historic and modern buildings and infrastructure which will be managed sustainably.

No.	Action	How will we do this	Cost	Date required by	How will we measure this?	Responsible Committee	Progress to date
2.1	Undertake an energy audit of all Town Council buildings and identify ways to reduce energy consumption	Review options to procure a consultancy to undertake this work					
2.2	Implement energy reduction measures as per report	The report will detail what can be done – measures will be variables of short/medium/long term and low/medium/high cost					
2.3	Ensure all new Town Council constructions have sustainability embedded into their design	Included within each specification					
2.4	Procure FSC certified timber where possible and 'green' products	Look at what we buy and the impact it has had					

3. Protecting and enhancing the natural environment

We are directly responsible for a wide range of natural environments and shall work to enhance these and look to support initiatives that enhance other natural areas within the town.

No.	Action	How will we do this	Cost	Date required by	How will we measure this?	Responsible Committee	Progress to date
3.1	Undertake a 'biodiversity' audit of all sites owned by the Town Council to assess their importance within the natural environment, such as the Fen	Essex Wildlife using volunteers	None	31 st June 2023	Reports produced	Planning and Environment	Reports for Fen currently in place and reports to be distributed at meetings
3.2	Identify areas on Town Council land where trees can be planted	Areas identified and trees planted	Not yet known	On-going	Trees planted	Planning and Environment	Possible additional trees could be planted in parts of John Cox area, as part of improvement works

3.3	Work with partners to implement actions identified	Identify areas within Strategy that can be developed					
-----	--	--	--	--	--	--	--

4. Encouraging, educating, and embedding environmental best practice

We shall work with the community and other stakeholders to encourage environmental best practice.

No.	Action	How will we do this	Cost	Date required by	How will we measure this?	Responsible Committee	Progress to date
4.1	Recommend that all new constructions in South Woodham Ferrers have sustainability at their heart	Include recommendation in all responses to planning applications	None			Planning & Environment	
4.2	Develop partnership projects through Town Partnerships with organisations such as Essex Wildlife. Promote nature talks and educational events.	Through funding, monitoring, and staff time	Not yet known		Successful projects being delivered		
4.3	Promote events such as Car Free Day in September	Posters, social media and possible 'car free zones' on that day.	Not yet known		Posters, <u>roads to be identified</u> (if any) if possible and consultation to be done. Traffic orders to be obtained		

4.4	Promote and support the use of cycling and walking.	Posters, social media and looking at what disincentives people from walking or cycling	Not yet known				
-----	---	--	---------------	--	--	--	--

5. Protecting local infrastructure

By working with the community and stakeholders we shall strive to protect and enhance local infrastructure to retain a vibrant and sustainable town

No.	Action	How will we do this	Cost	Date required by	How will we measure this?	Responsible Committee	Progress to date
5.1	Support a Rights of Way survey to encourage walking in the area	Identify solution and work with partners or other stakeholders					

5.2	Promote, where possible, the use of local bus services in South Woodham Ferrers. Look at the loss of new registrations for Chelmsford Community Transport users. Look at DaRT services provide a Demand Responsive Transport system for the town	Review options around promotion of local buses for South Woodham Ferrers. Contact Chelmsford and Community transport groups to look at options	unknown				
5.3	Campaign to ensure essential services are retained in South Woodham Ferrers to minimise travel requirements.	By working with Chelmsford City Council, and other relevant authorities,					
5.4	Looking at preserving and improving our green and wild areas. Improvements to encourage access, but also wildlife, with bird boxes	Working with outside groups such as Essex Wildlife, but also internal such as John Cox Working Party	Unknown				

6. Supporting Sustainable Tourism

We shall support the town's tourism economy through the promotion of sustainable tourism.

No.	Action	How will we do this	Cost	Date required by	How will we measure this?	Responsible Committee	Progress to date
6.1	Develop a sustainable tourism vision	Work with stakeholders to develop a vision of what a sustainable destination might mean for South Woodham Ferrers					
6.2	Promote sustainable transport and walking around the town to reduce the need for visitors to use cars	Look at alternative forms of transport and promote these on website and digital media					
6.3	Consideration for events run by Town Council to reduce single use plastic where possible and practical						
6.4	Enhance the supply of free drinking water solutions across the town, such as the water bottle filler in the station.	Helping to reduce single use plastic drinking water bottles.					

6.5	Work with event organisers to promote sustainability at their events.						
-----	---	--	--	--	--	--	--

Appendix 1

South Woodham Ferrers Town Council Mission Statement

Our aim is to promote a sustainable green community that values its natural environment and economic growth while preserving our natural resources.

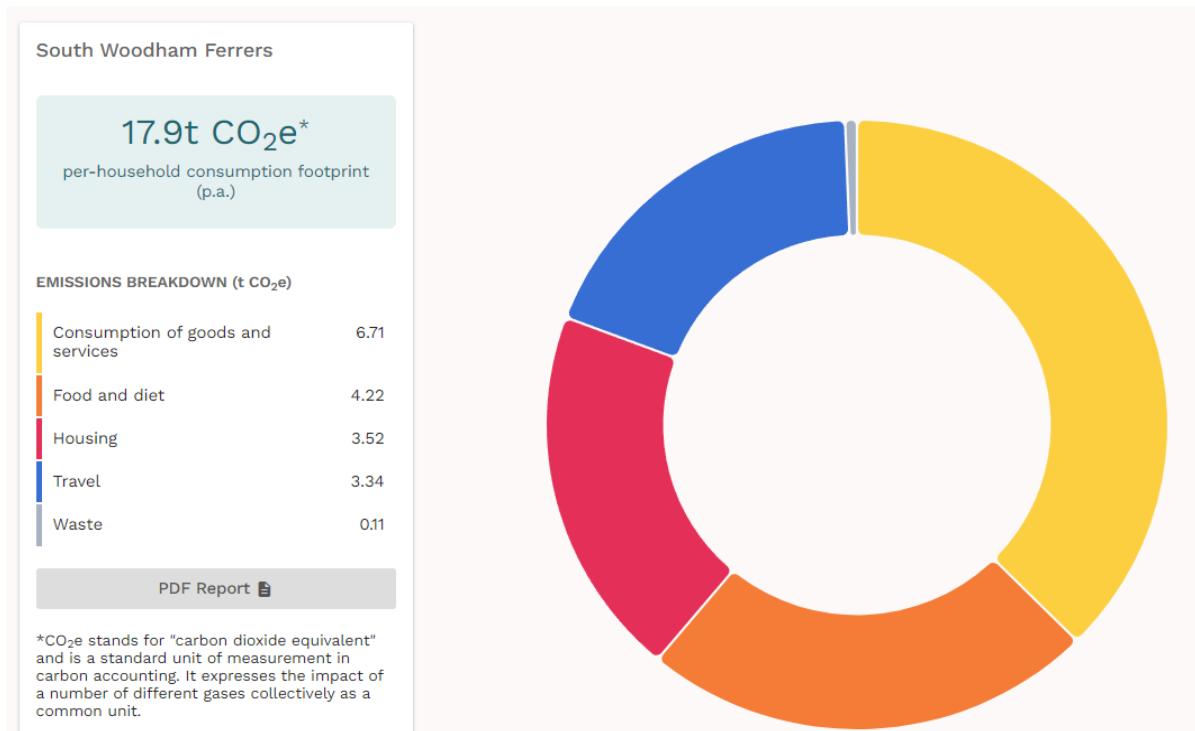
We will strive to reduce our ecological footprint by minimizing waste, conserving resources, and creating green processes to ensure that long-term health of our planet.

Inspiring green solutions for a healthy community. Helping to protect our planet and securing our future.

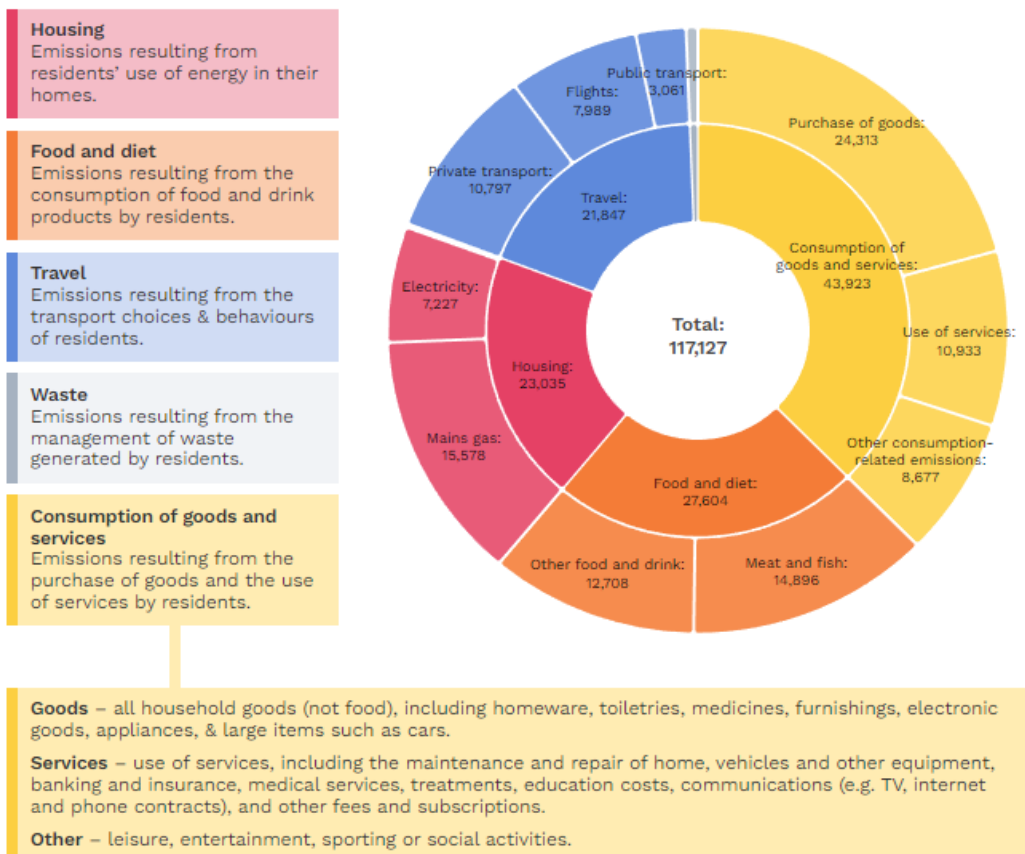
“Environment, Ecology, Enterprise”

Appendix 2

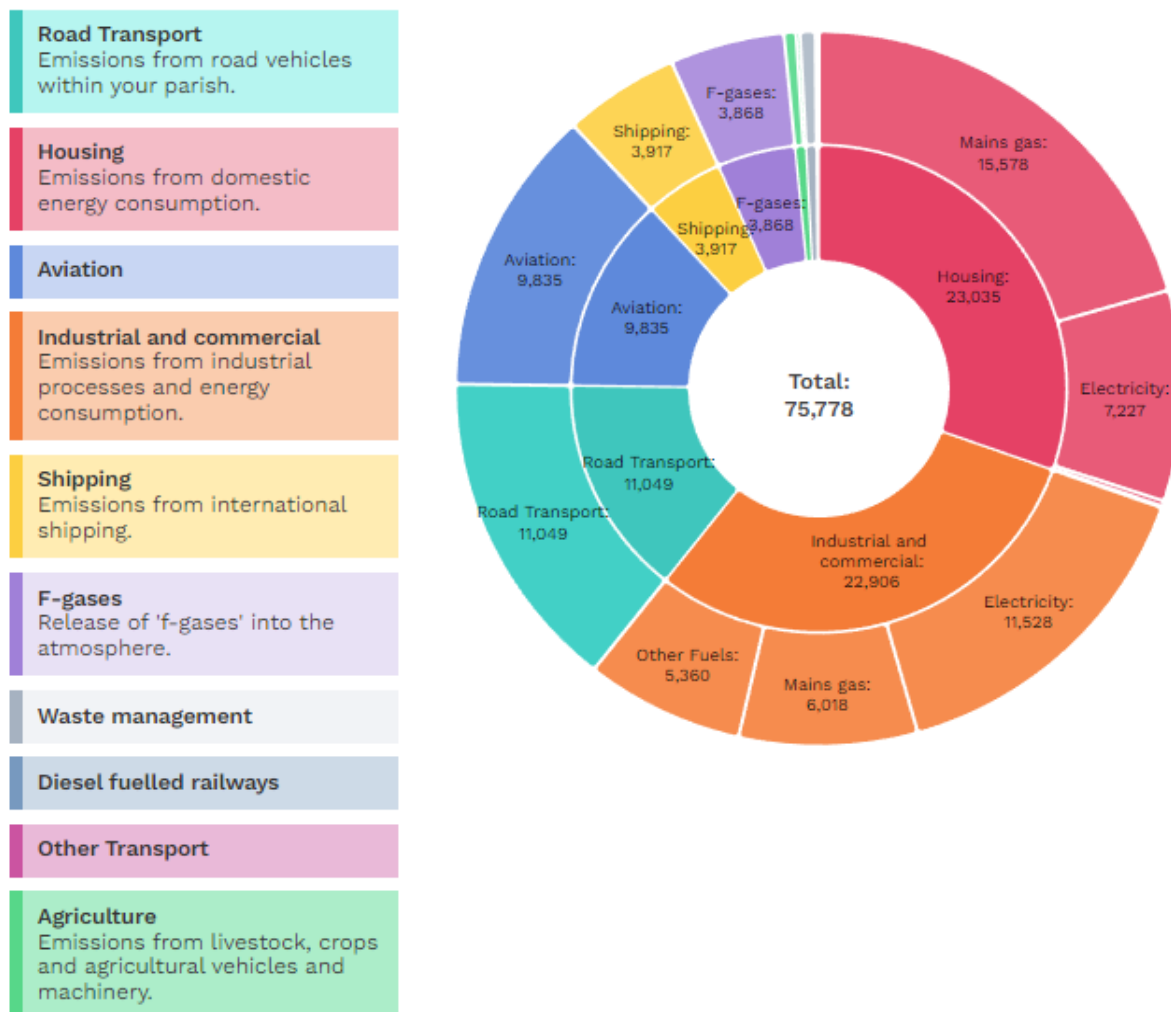
South Woodham Ferrers as a Town.



A breakdown of the data

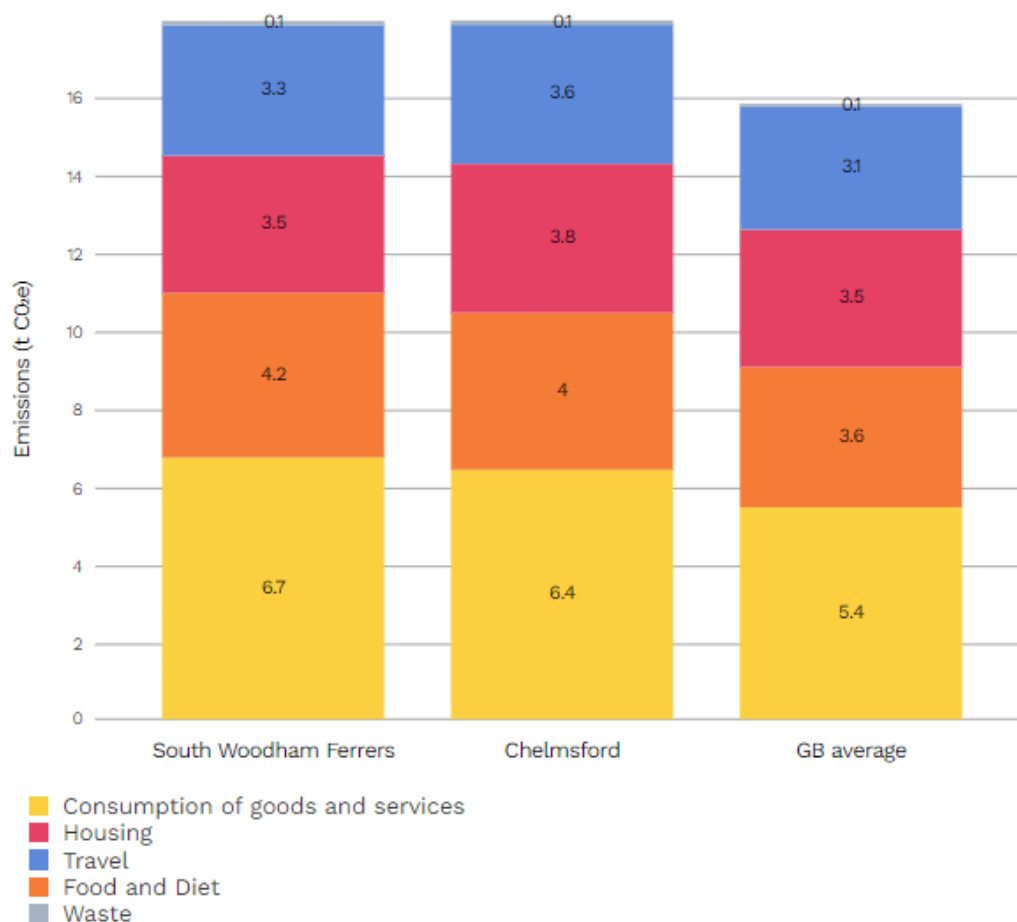


Annual carbon emissions (measured in tonnes) emitted as a result of activities taking place within South Woodham Ferrers



Our community’s residents’ use of energy in their homes results in annual carbon emissions per household of 3.5 t CO₂e. This compares with 3.8 t CO₂e at the district level and 3.5 t CO₂e at the national level. In the average UK home, 64% of energy is used for space heating, 17% for heating water, 16% for lighting and appliances, and 3% for cooking. As such a large proportion of household energy is used for heating, the type of heating system (i.e. is it low carbon?), and how well the home retains heat, are critical factors shaping the scale of a home’s emissions. How well a home retains heat depends on a number of factors, including: when and how it was built; how much insulation has been installed; how draughty the home is; the efficiency of the windows; and the behaviour of the residents. The above chart has been scored across ten categories, each covering the crucial information as of June 2023. The data is the latest available, which is generally not more than 18 months old.

How do we compare to Chelmsford as a whole, against nationally?



Notes: These figures are average. The carbon footprints are modelled, drawing on data from more than 30 datasets (some of which are themselves made up of multiple further datasets!). As with all models, decisions have been taken in terms of what data is used, and how the data is ‘cut’ and analysed. The Impact footprints have been developed with the intention that they are as useful as possible, but remember to take them as a guide, not as gospel.

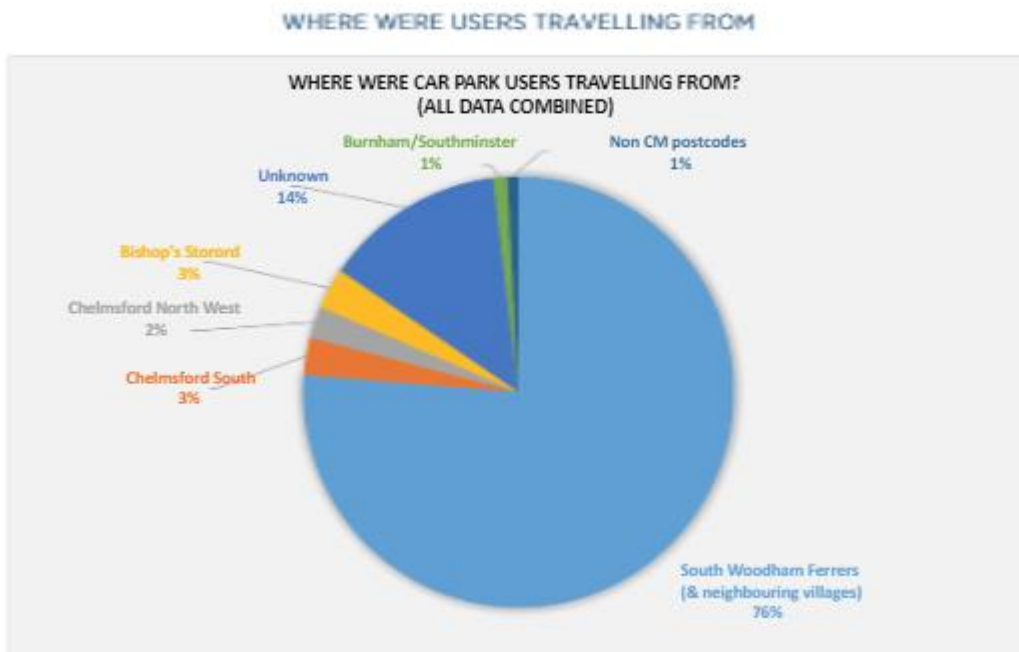
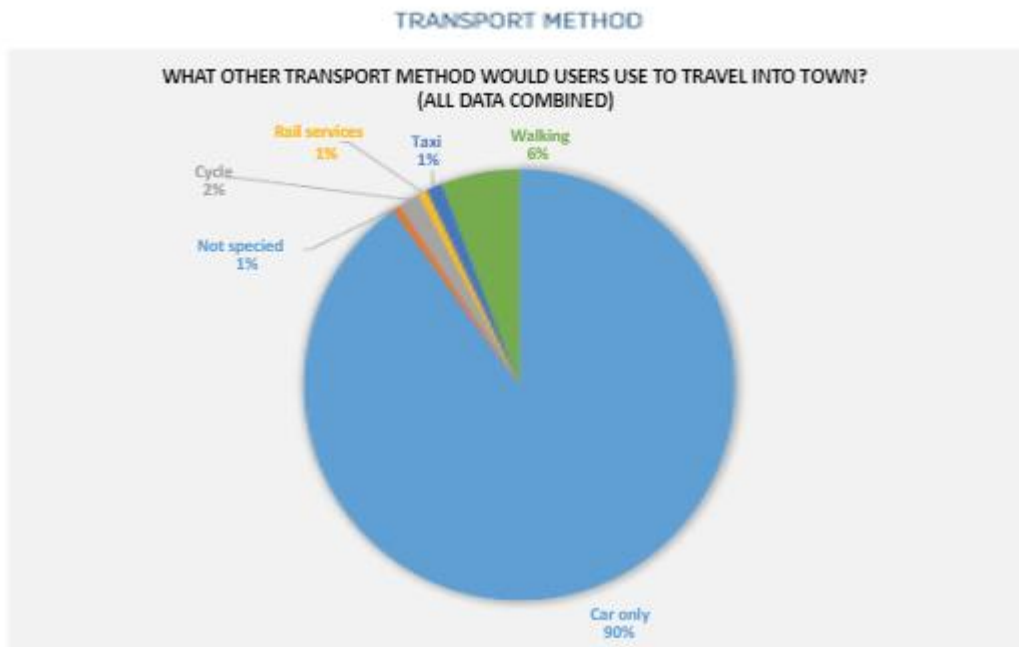
We recognise ‘it isn’t easy being green’.

There are lots of ways to be greener, from not using the car for just one day, or really thinking about what you can do. Arguments against some green aspects include the lifespan of wind turbines, solar panels and how they are made. Solar panels are made primarily of silicon, which is mined in open pit mines and requires high heat for proper shaping. They also contain metals and rare earth minerals, which are mined and transported. This is all mostly done with fossil fuels and thus has a carbon footprint: a typical house array of ten panels, each with a peak capacity of 350 watts, will have an embodied carbon footprint of around two tonnes.

Our total annual carbon footprint in the UK is about 12 tonnes each, so this looks like a sizeable proportion. But solar panels last a long time - the latest solar panel models on the market have an expected lifespan of 40-50 years. Even on our gloomy and dark island their carbon footprint can be paid back in the first six years of their operation. If you live somewhere sunnier, this can go down to as little as 1.5 years.

Transport

We remain a town which relies on the use of the car for most transport needs. Residents remain reluctant to use other means of transport, and most traffic in town is generated by local drivers. Can we encourage long term changes to this transport pattern, by walking and cycling?



Respect

We know there are many views on this subject, and we respect peoples rights to have their view, but there can be very few, if anyone who wants to see our green areas ruined and our eco system damaged. We take the view that we continue to adopt a green and eco-friendly policy and will encourage everyone to follow this. We will listen to views and suggestions if they benefit our aims we will consider them for adoption into this Action Plan when it is next reviewed. We need to look at a long term view, investment and also recognise we cannot change overnight, but we can all make a start and take small steps to reduce our carbon footprint.

As a Town Council, we will continue to take small steps to help preserve and protect our enviroment and also to reduce our impact. We join our City Council and other local parish and town councils in doing our part in making a difference. We ask that all our residents try and take part in our goals.

Links

<https://impact-tool.org.uk/report?regionId=E04003972&geography=parish>

<https://www.ipcc.ch/data/>

<https://chelmsfordct.org/>

<https://www.livingstreets.org.uk/about-us/our-work-in-action/world-car-free-day>

<https://www.councilclimatescorecards.uk/councils/chelmsford-city-council/>

<https://impact-tool.org.uk/footprint/footprint?regionId=E07000070&geography=local-authority&footprintType=consumption&scale=per-household>

<https://impact-tool.org.uk/footprint/footprint?regionId=E10000012&geography=local-authority&footprintType=consumption&scale=per-household>

<https://www.essex.gov.uk/planning-land-and-recycling/planning-and-development/minerals-waste-and-county-council-planning-0>

<https://www.essexdesignguide.co.uk/understanding-context/environment-context/environmental-impact-assessment/>

<https://fill.io/document/c1e84f44-4f51-413b-af8a-a462e833cb6b>

<https://www.essexdesignguide.co.uk/media/1563/eb0562-a-ppg17-open-spaces-assessment-for-chelmsford-borough-council-main-report.pdf>