



# The South Woodham Ferrers Neighbourhood Plan

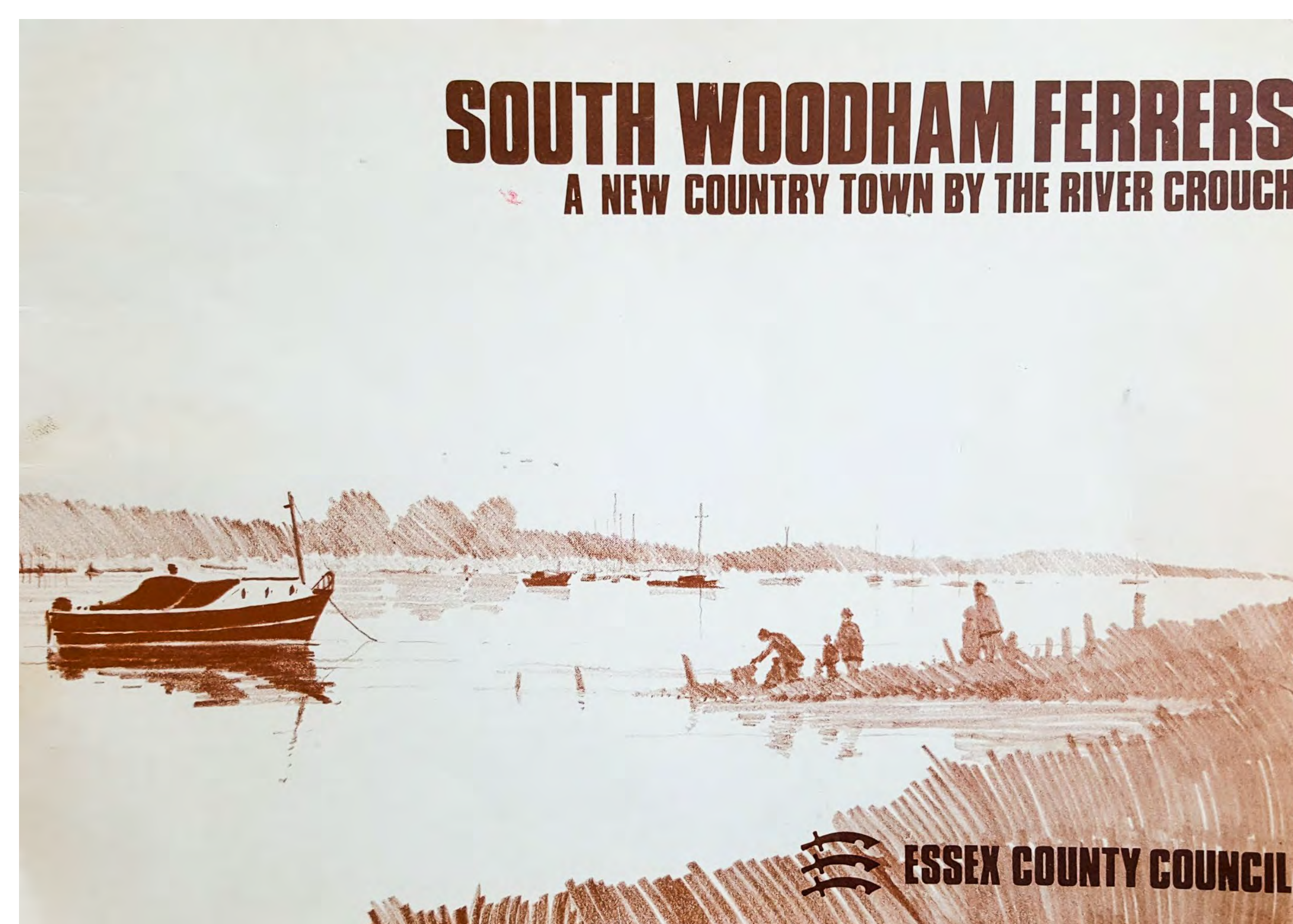


## Your South Woodham Ferrers, Your Plan

The Town Council is preparing a Neighbourhood Plan for South Woodham Ferrers. This is a powerful opportunity for the community to have their say and make a difference in the town.

The Neighbourhood Plan will establish planning policies that shape and influence future growth and development in South Woodham Ferrers.

But the Neighbourhood Plan can be about more than planning policies. It can also be used to express your vision for the future and articulate priorities for strengthening the unique qualities of South Woodham Ferrers.



The Plan can help influence change, such as that proposed to the north of the town, and say what improvements in the town that might help deliver, such as infrastructure improvements.

Having a Plan in place will help deliver and fund change: 25% of the money raised from developer contributions paid through the Community Infrastructure Levy can be spent on projects in South Woodham Ferrers. Through the Neighbourhood Plan we can identify our priorities for how and where this money should be spent.

The Neighbourhood Plan is not the same as the new Chelmsford City Local Plan. The Local Plan presents the strategic policy direction, but the Neighbourhood Plan provides the opportunity to present locally specific policies and proposals that will help shape the future of South Woodham Ferrers.

Many communities all across the country have been preparing Neighbourhood Plans. This is an exciting opportunity to influence change in South Woodham Ferrers. Please tell us what you think.

To find out more about the Plan please visit the  
Town Council website:  
<http://www.southwoodhamferrers.gov.uk/>

To leave your comments on the emerging ideas  
please use the SurveyMonkey questionnaire:  
<https://www.surveymonkey.co.uk/r/92D36VG>



SOUTH WOODHAM FERRERS  
TOWN COUNCIL





# The Focus of the Plan

## What you told us:



### 1. Revitalise the Town Centre

- The town centre should provide a wider range of shops, restaurants, civic and community facilities
- Explore potential for new employment opportunities and space for start-up businesses
- Improve the quality of the public realm and connections with the town as a whole
- Make this an attractive and welcoming place for people to spend time in



### 2. Improve access and movement for all

- Provide better walking, cycling and public transport facilities, both within the town but also to Wickford and Chelmsford
- Reduce the speed of traffic on main roads so that these become safer places for all users
- Provide the right amount of parking provision, in the right places, in new and existing development



### 3. Integrate green space into the town

- Introduce new street-tree planting and green routes in the built-up area that link to the surrounding green spaces
- Improve access across Ferrers Road to Saltcoats and Compass Parks
- Provide a range of sports and leisure facilities for all ages
- Improve flood defences and provide new flood mitigation measures



### 4. Influence the new growth area

- Join this with the existing built-up area, improving connections across Burnham Road
- Provide a range of housing types, including those for young families, as well as opportunities for self-build homes
- Contribute towards provision of improved social and community infrastructure across the town as a whole
- Respond to views, local landscape, and provide access to green space.

To find out more about the Plan please visit the Town Council website:  
<http://www.southwoodhamferrers.gov.uk/>

To leave your comments on the emerging ideas please use the SurveyMonkey questionnaire:  
<https://www.surveymonkey.co.uk/r/92D36VG>



**SOUTH WOODHAM FERRERS  
TOWN COUNCIL**

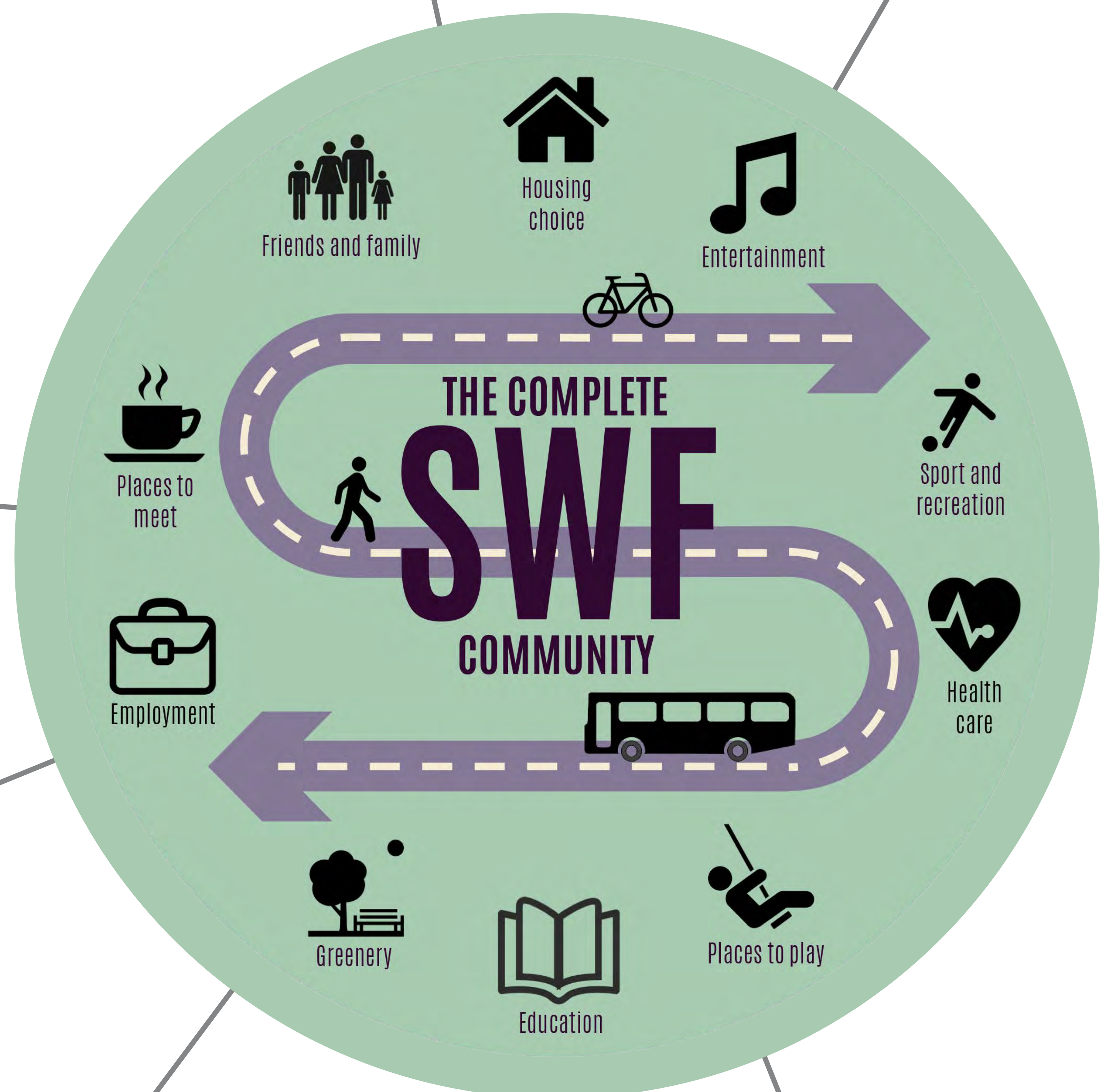




# The 'Complete Community'

**We see South Woodham Ferrers becoming the 'Complete Community'.**

You previously told us that there is a strong sense of community in South Woodham Ferrers and that the town has a strong identity. Our vision seeks to maintain and strengthen this, providing a safe, friendly, green, accessible and welcoming place for all, with a range of housing choices, leisure and employment opportunities, all in easy walk and cycle of the home, and with a strong and vibrant town centre at the heart of the town.



To find out more about the Plan please visit the Town Council website:  
<http://www.southwoodhamferrerstc.gov.uk/>

To leave your comments on the emerging ideas please use the SurveyMonkey questionnaire:  
<https://www.surveymonkey.co.uk/r/92D36VG>

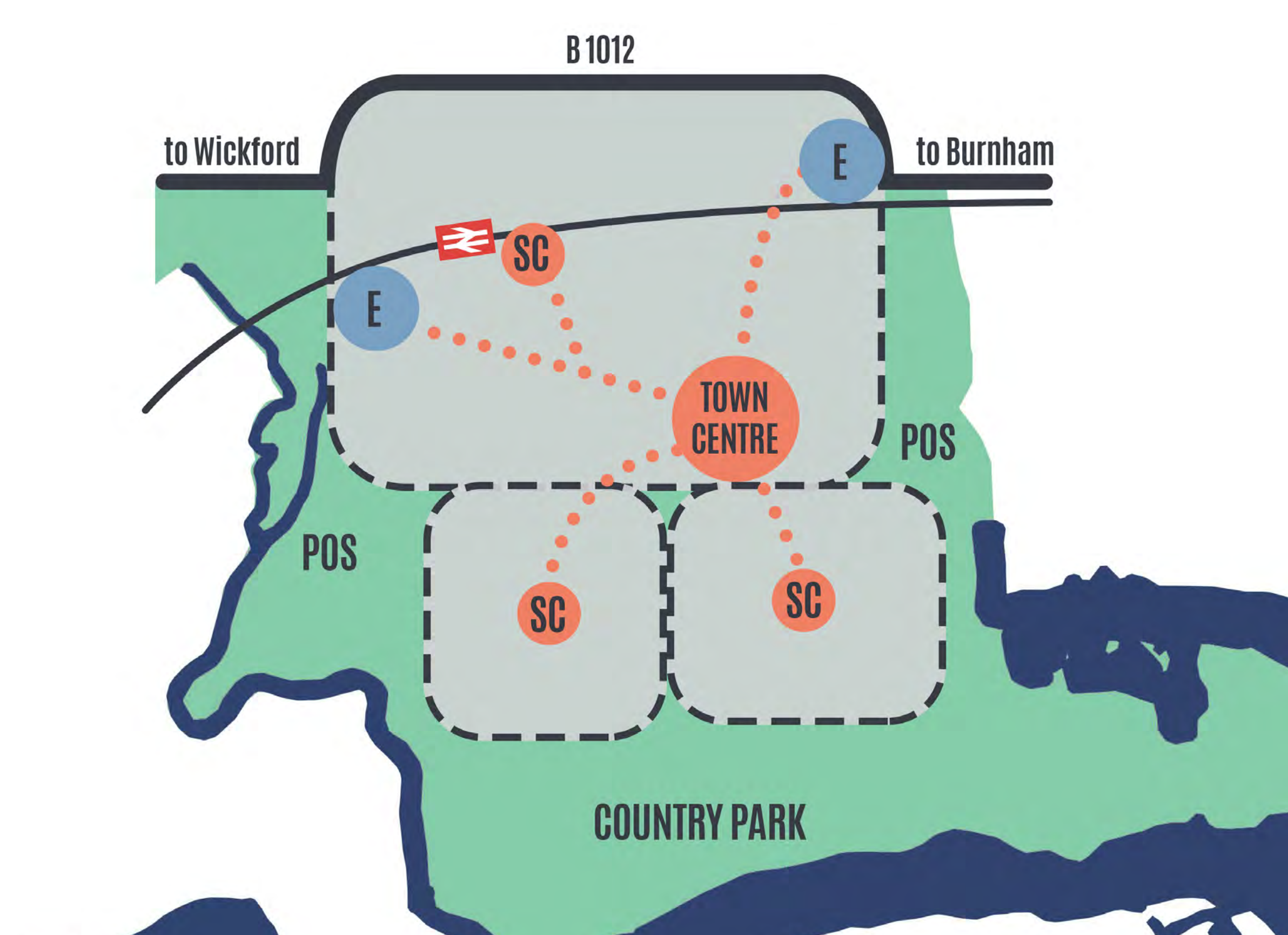


SOUTH WOODHAM FERRERS  
TOWN COUNCIL





# Towards the “Complete Community”

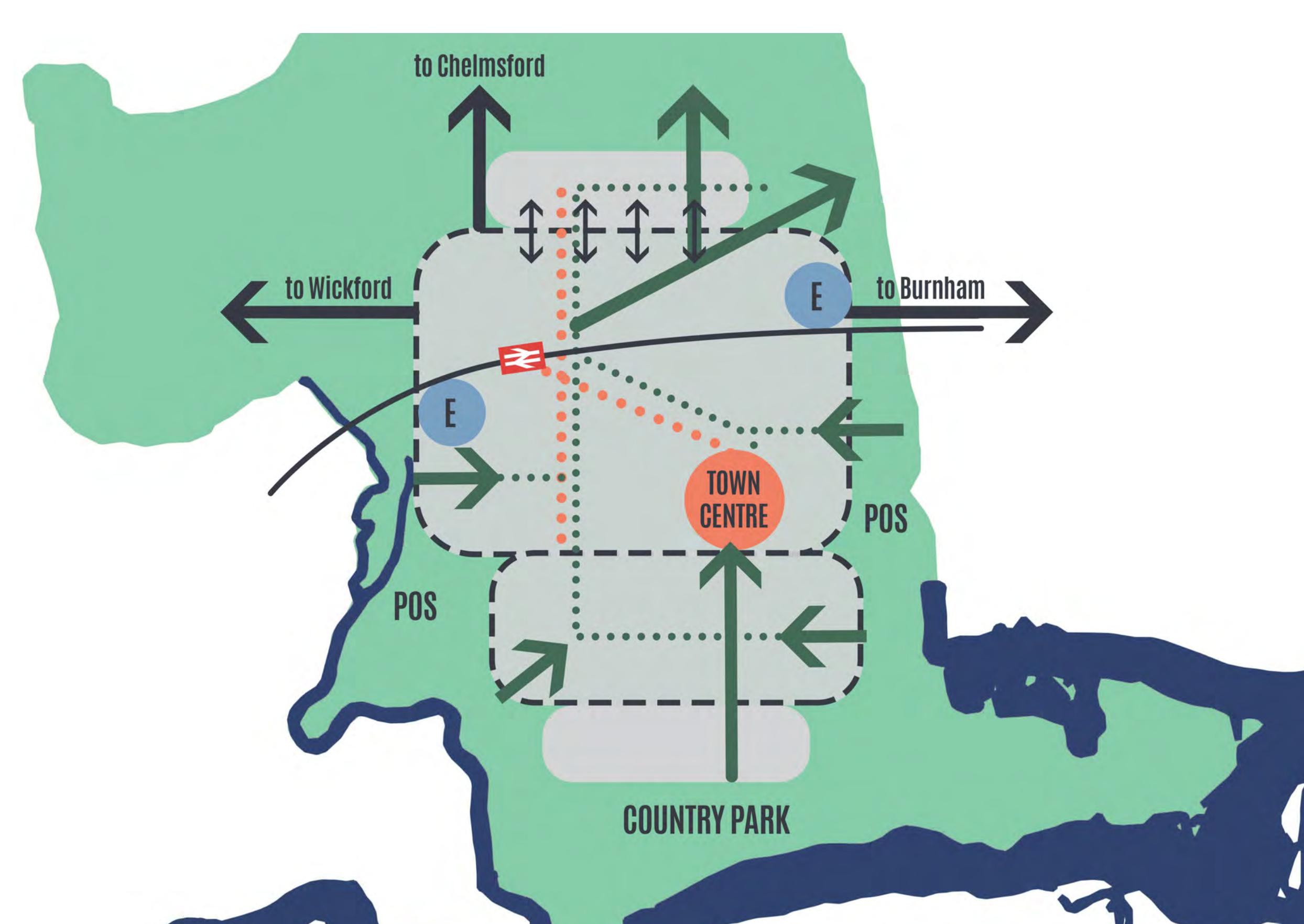


## The original masterplan

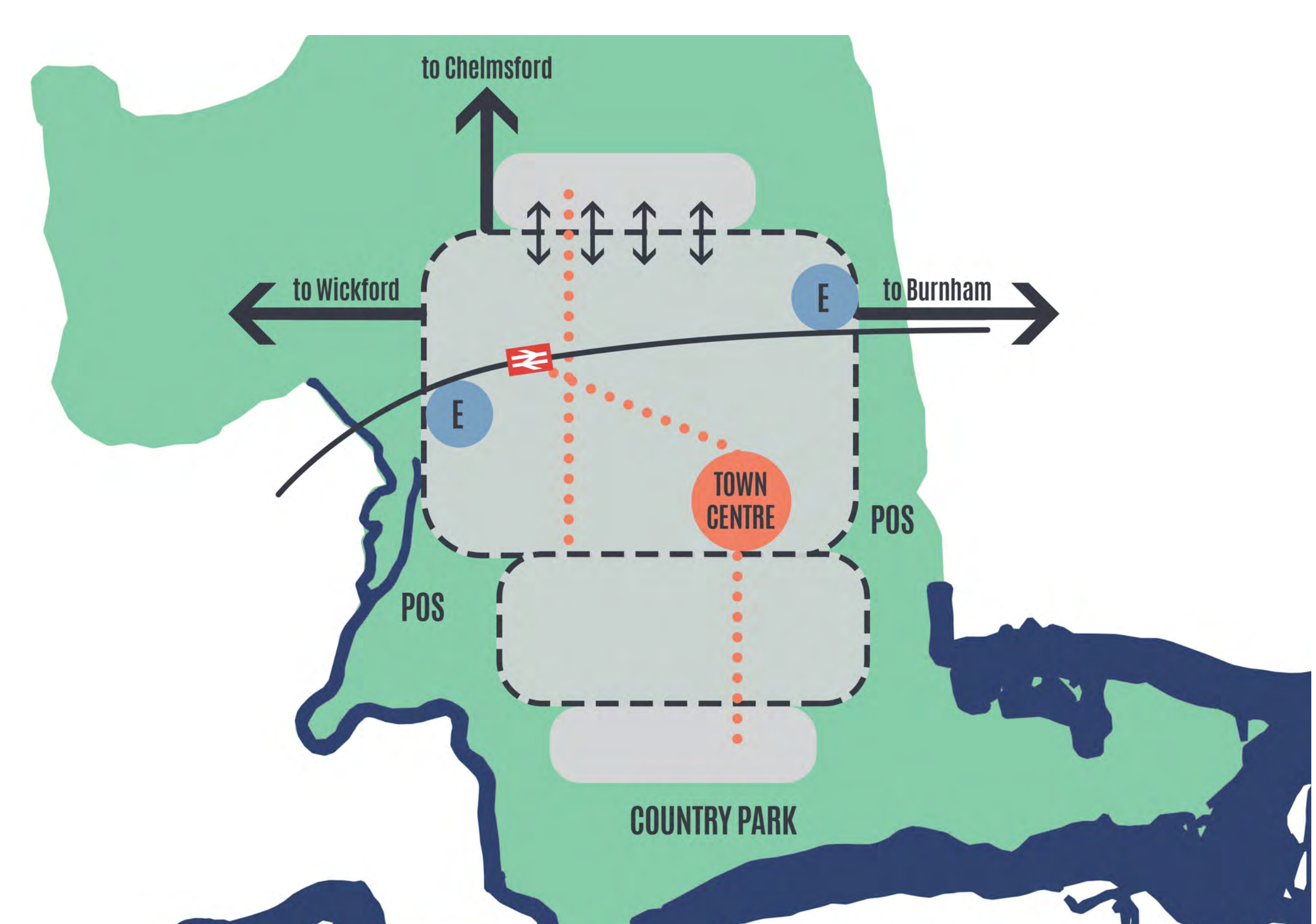
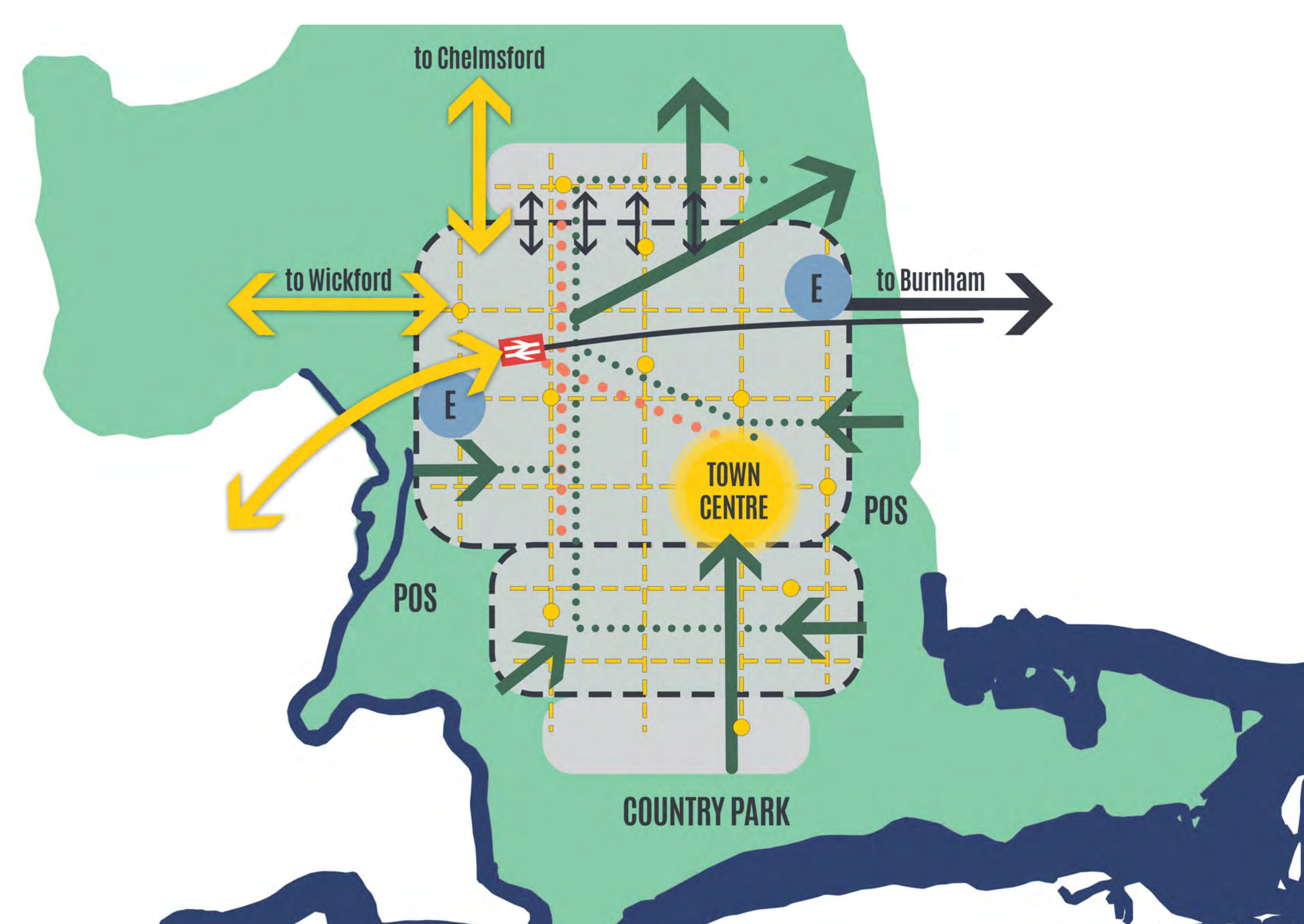
The character of South Woodham Ferrers is strongly related to the original vision for the town and legacy of the Essex Design Guide. Although envisaged as a ‘new riverside country town’, and despite being surrounded by green space, the relationship between the town and surrounding space is limited.

## Updating the masterplan

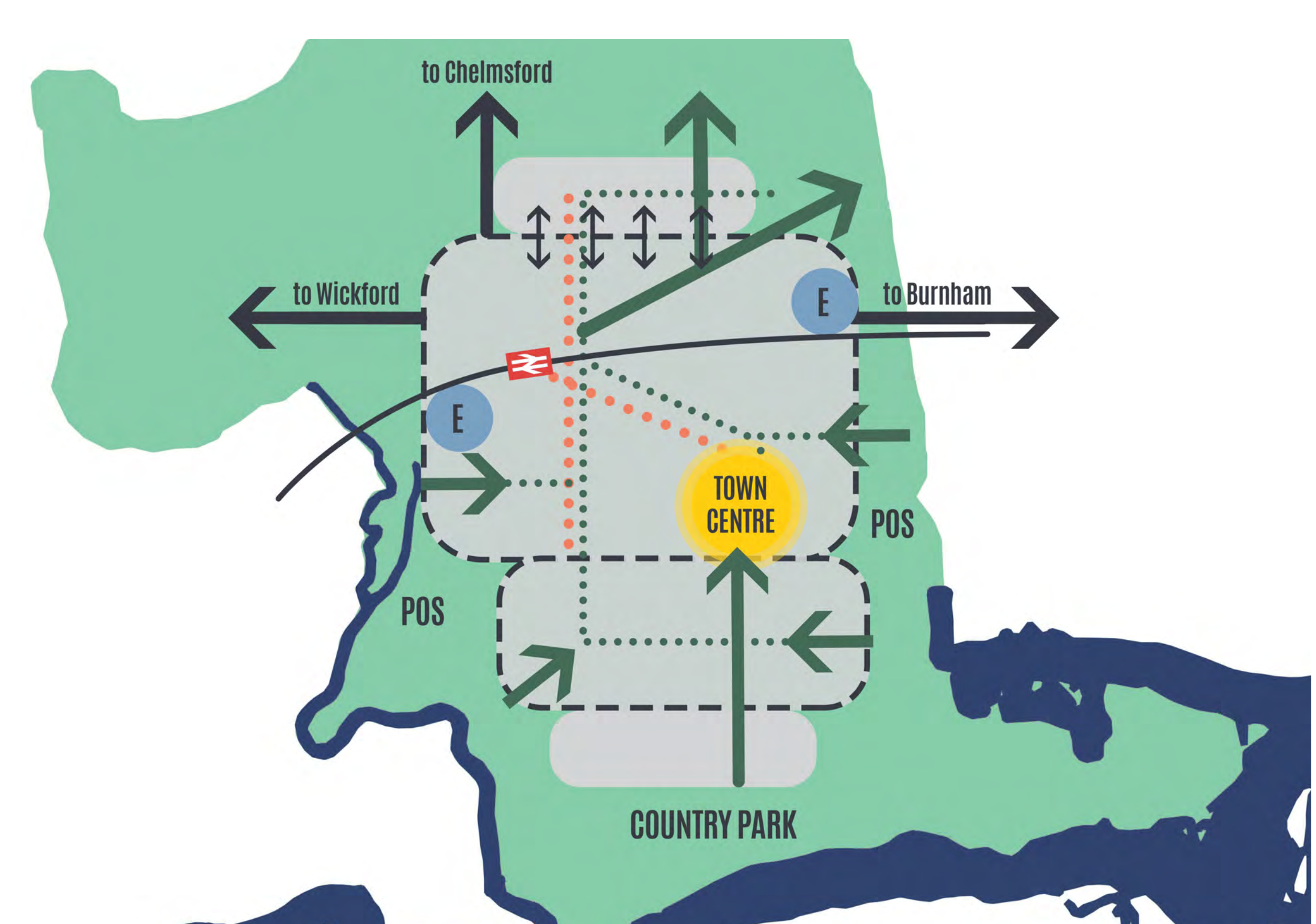
- New growth to the north of South Woodham Ferrers will be well connected to the existing town, particularly by foot and by bicycle.
- New growth to the north also provides the opportunity to provide new accessible green space for the enjoyment of all, wrapping the town with a network of connected open space.
- Roads are redesigned as streets, creating safer places for all.



- The Town Centre is reinvigorated as the hub of social life and activity in South Woodham Ferrers
- A wider range of uses and activities are found in the town centre, set around welcoming and attractive spaces



- Green fingers and spaces reconnect the town with the surrounding landscape.
- Opportunities for new street trees and rain gardens within the public realm, integrating water within the urban environment, minimising surface flood risk and reinterpreting the riverside setting: South Woodham Ferrers becomes the ‘riverside country town’.



- A lattice of well-connected walking and cycling routes provide excellent connections for all people of all ages
- Everyone is within a ten-minute walk or cycle of day-to-day services and facilities, including schools, healthcare, shops, employment and leisure opportunities
- Transport connections to nearby towns, particularly by bus and by train, are improved

To find out more about the Plan please visit the  
Town Council website:  
<http://www.southwoodhamferrerstc.gov.uk/>

To leave your comments on the emerging ideas  
please use the SurveyMonkey questionnaire:  
<https://www.surveymonkey.co.uk/r/92D36VG>



SOUTH WOODHAM FERRERS  
TOWN COUNCIL







# What do you think?

## Your views will help shape the plan

The Neighbourhood Plan is a Plan for the community by the community.

Do you agree with the suggested focus of the Plan?

Do you have any other ideas or suggestions?

Do you have any burning issues or ideas not covered?  
Please let us know.

We will use your comments to help identify possible projects and planning policies for South Woodham Ferrers and seek your feedback on these in the summer.

## NEXT STEPS

We will continue to work with you to shape the Neighbourhood Plan for South Woodham Ferrers.

It will eventually be subject to examination and referendum, where everyone of voting age living in South Woodham Ferrers will have a chance to vote on whether the Plan should come into force.

If more than 50% of people vote 'yes' then the Plan can be used to inform and determine planning applications.



To find out more about the Plan please visit the  
Town Council website:  
<http://www.southwoodhamferrerstc.gov.uk/>

To leave your comments on the emerging ideas  
please use the SurveyMonkey questionnaire:  
<https://www.surveymonkey.co.uk/r/92D36VG>



SOUTH WOODHAM FERRERS  
TOWN COUNCIL

