



South Woodham Ferrers Neighbourhood Plan

Town wide ideas:
Green infrastructure

Troy Planning + Design
April 2019

The 'green necklace'

Completing the network of green space around the town, with a range of green space types provided



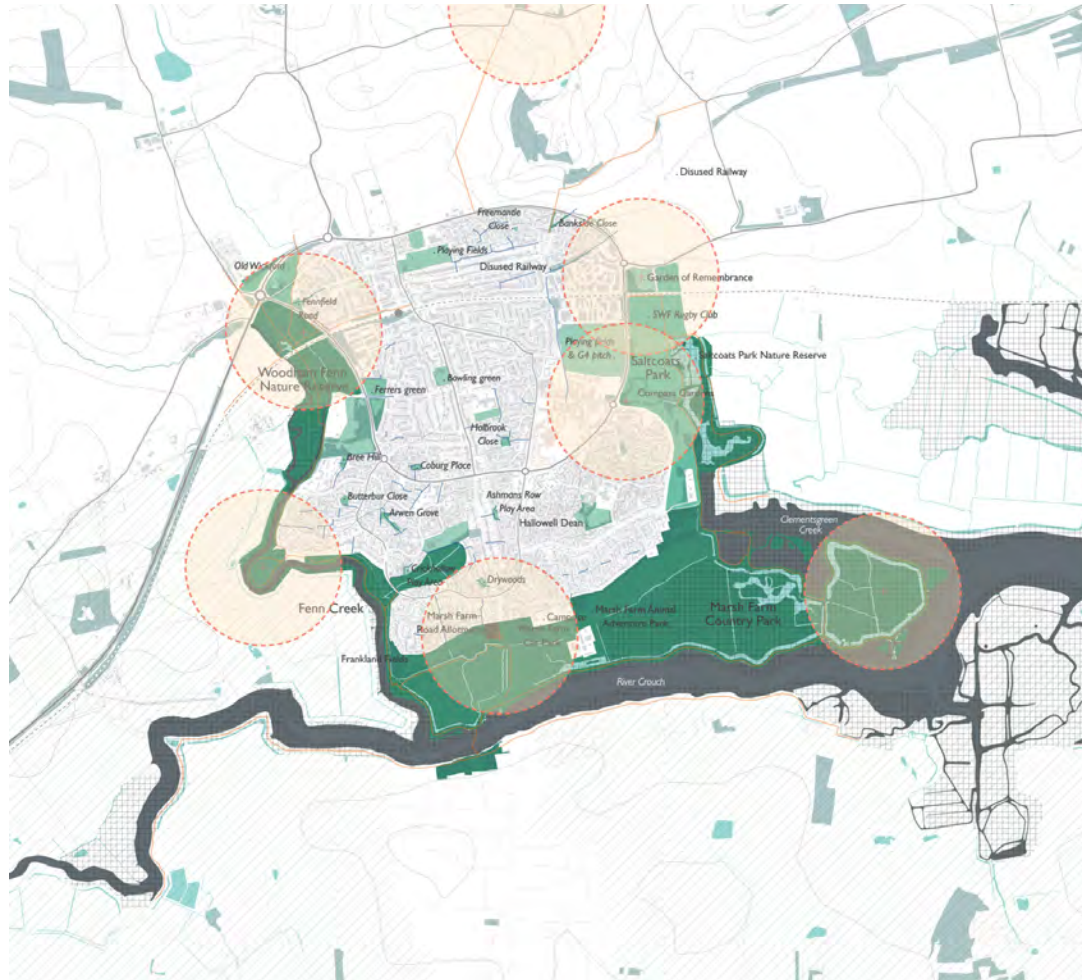
I ♥ SWF
NEIGHBOURHOOD PLAN

Legend

 5 Minute walking distance from natural green spaces

N ^{1:25,000}
ORTH
Walking distance
to natural green
spaces

Although the town is surrounded by green space, there is a lack of accessible green space within the urban area, and thus it is important that we make the links between the two, and or create new green space, potentially through some form of street improvements / street greening programme.



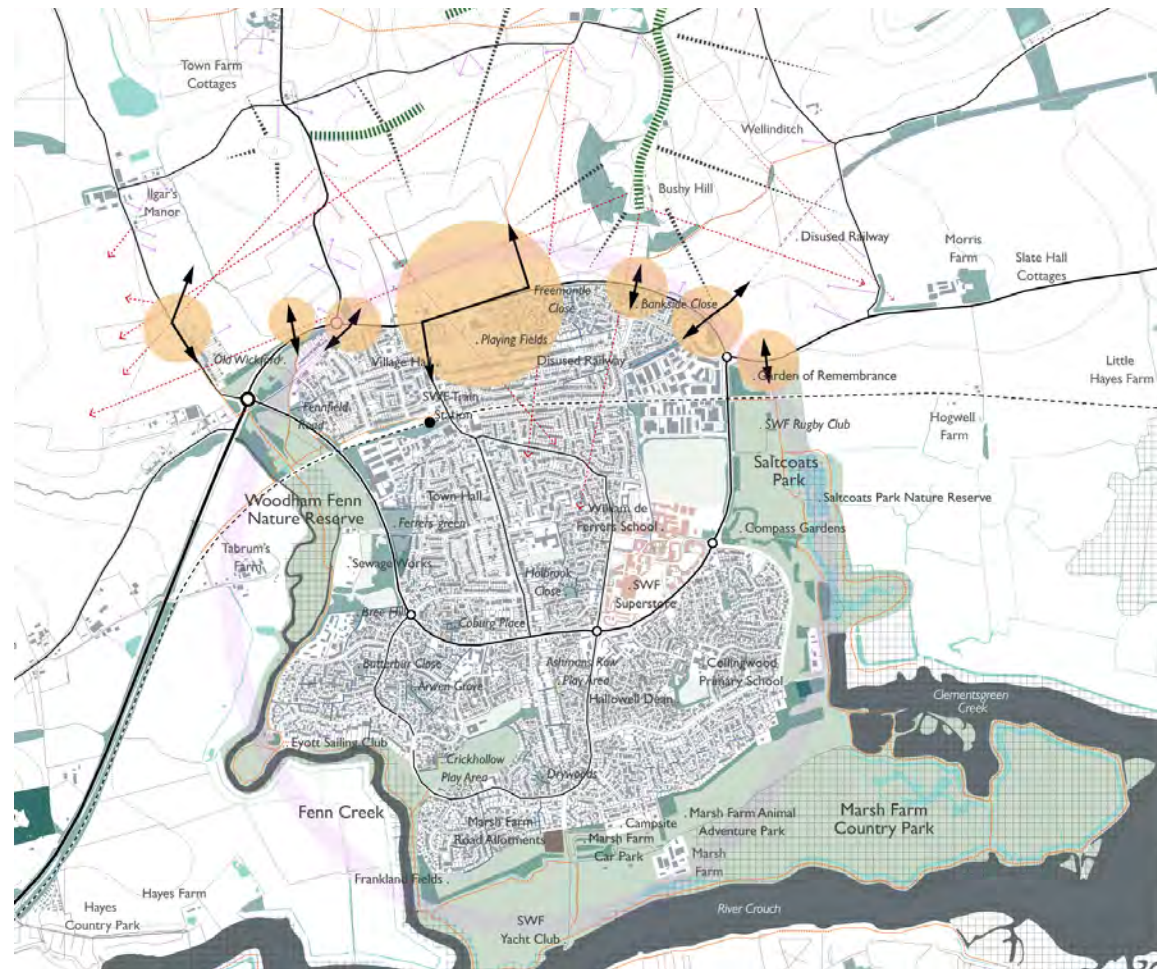
INTEGRATING WITH GREENERY

THE GREEN NECKLACE: COMPLETING THE NECKLACE

Provide new green space and access to this within northern growth area

New spaces should connect with the network of existing routes, including the former railway line

Provides for leisure, recreation and biodiversity



-  Potential connections to northern development area via existing green infrastructure / PROWS
-  Potential green necklace connecting green spaces around the town
-  Disused Railway
-  Footpath network
-  Protected Rights of Way

By creating an extension to the accessible green space around the town we create a green necklace with connections between the northern development area and the existing towns internal and external green spaces. These connections should bridge the gaps between the town and existing rights of way. An important wider connection makes use of the disused railway that connects to Cold Norton to the north east.

 1:20,000
NORTH
Potential green connections

Avenues and connections

Integrating the surrounding green space into the built environment, through street tree planting and landscaping, that provides a link between the two

Note: Also see Access paper for transforming 'roads' into 'streets'



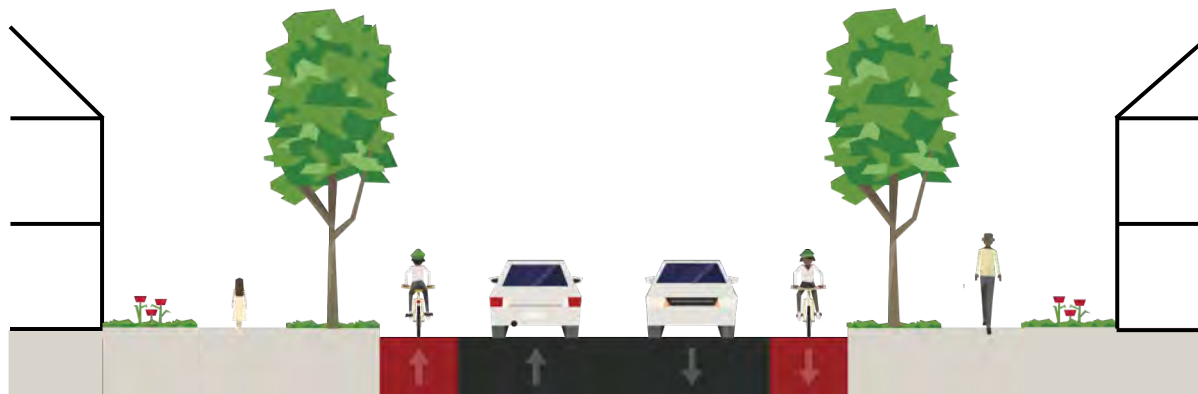
INTEGRATING WITH GREENERY EXISTING STREETS AND SPACES



Above: Potential to integrate landscaping within the public realm along Ferrers Road
Left: Potential for more planting on Inchbonnie Road, linking the centre with Radar Hill beyond

INTEGRATING WITH GREENERY

EXAMPLES AND OPPORTUNITIES



Example images from Sheffield 'Grey to Green' project, incorporating SUDs, rain gardens, public art, street furniture and improved walking conditions

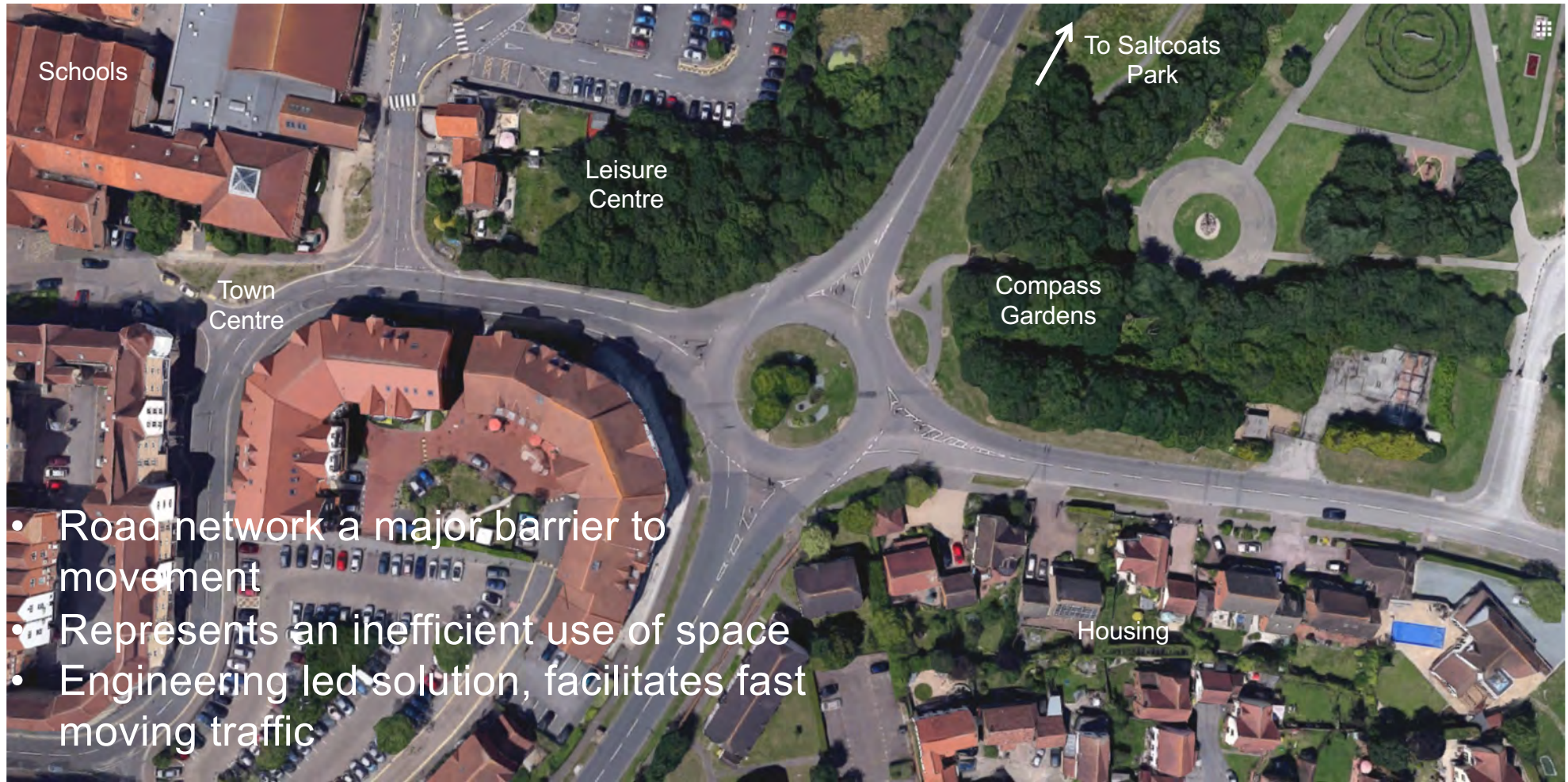
Breaking the road barrier

Making it easier to cross Ferrers Road, so that access to surrounding green space is safer for all

Note: also see Access ideas paper for transforming 'roads' into 'streets' and improving walking and cycling conditions

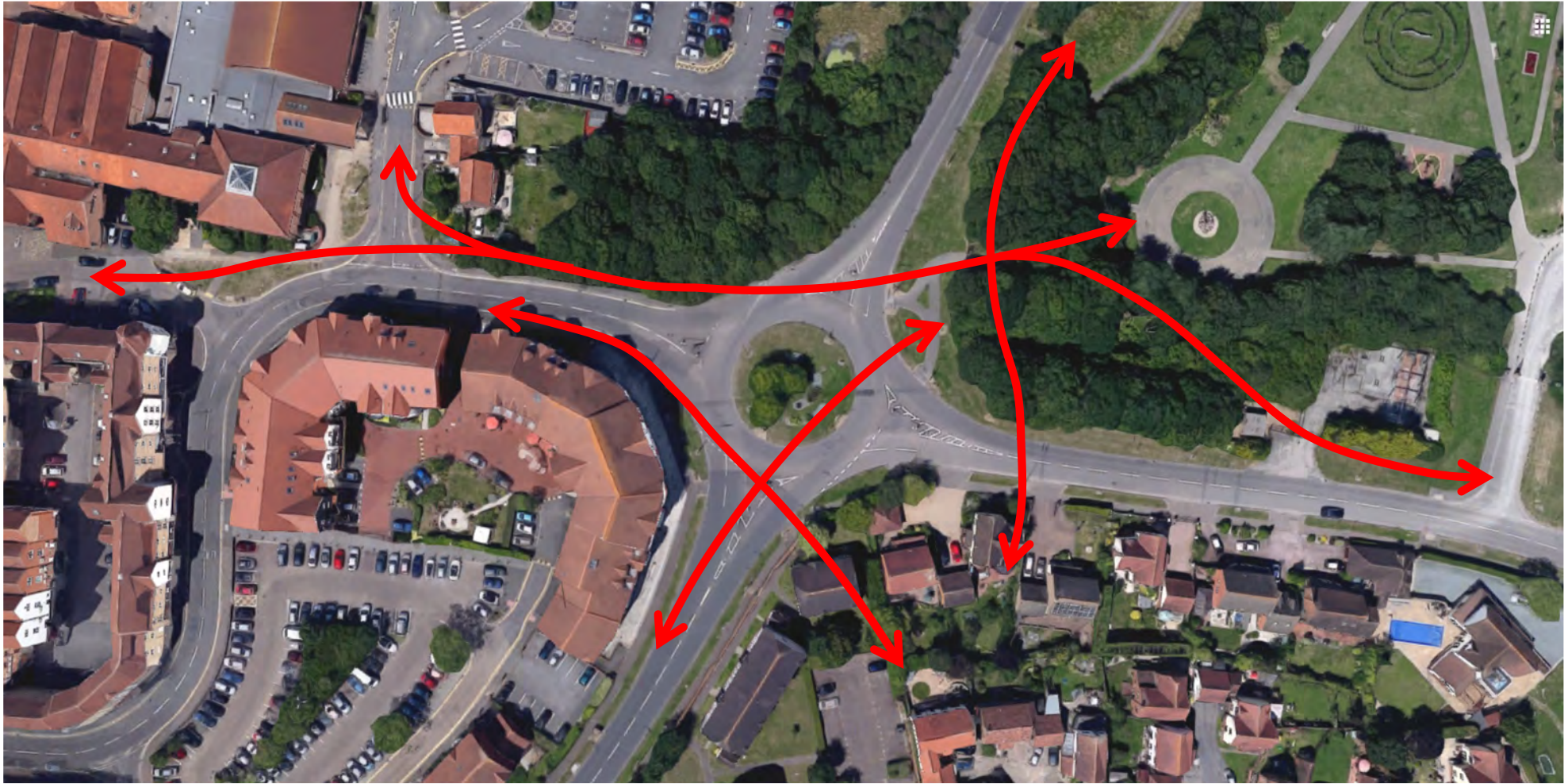


INTEGRATING WITH GREENERY EXISTING



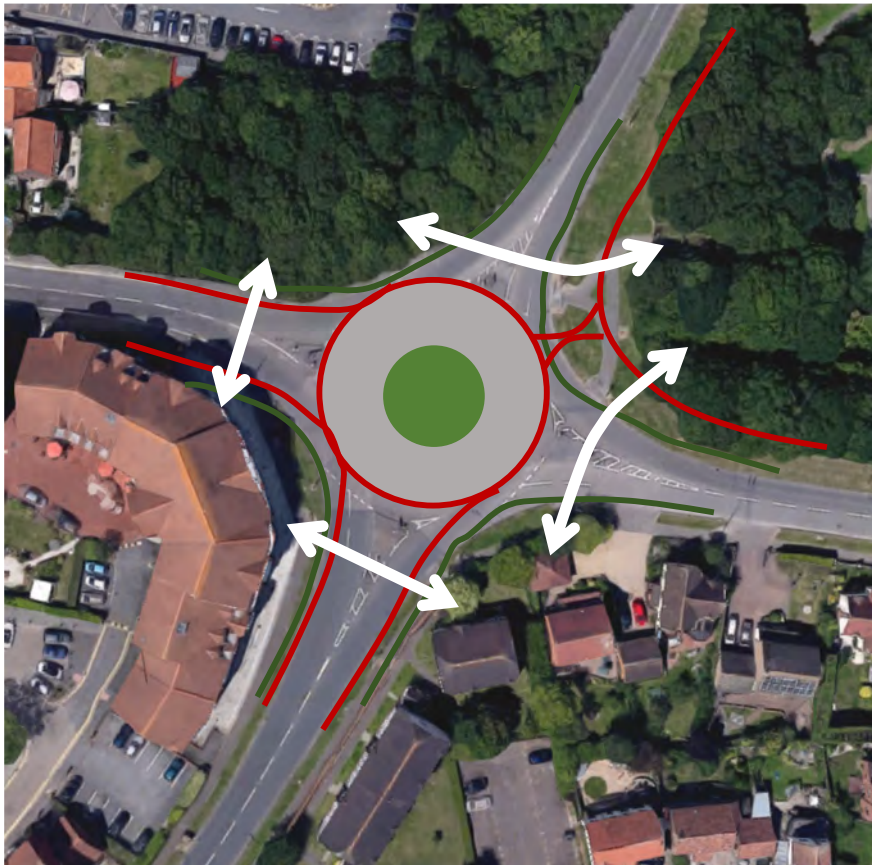
INTEGRATING WITH GREENERY

NON-VEHICLE DESIRE LINES



INTEGRATING WITH GREENERY

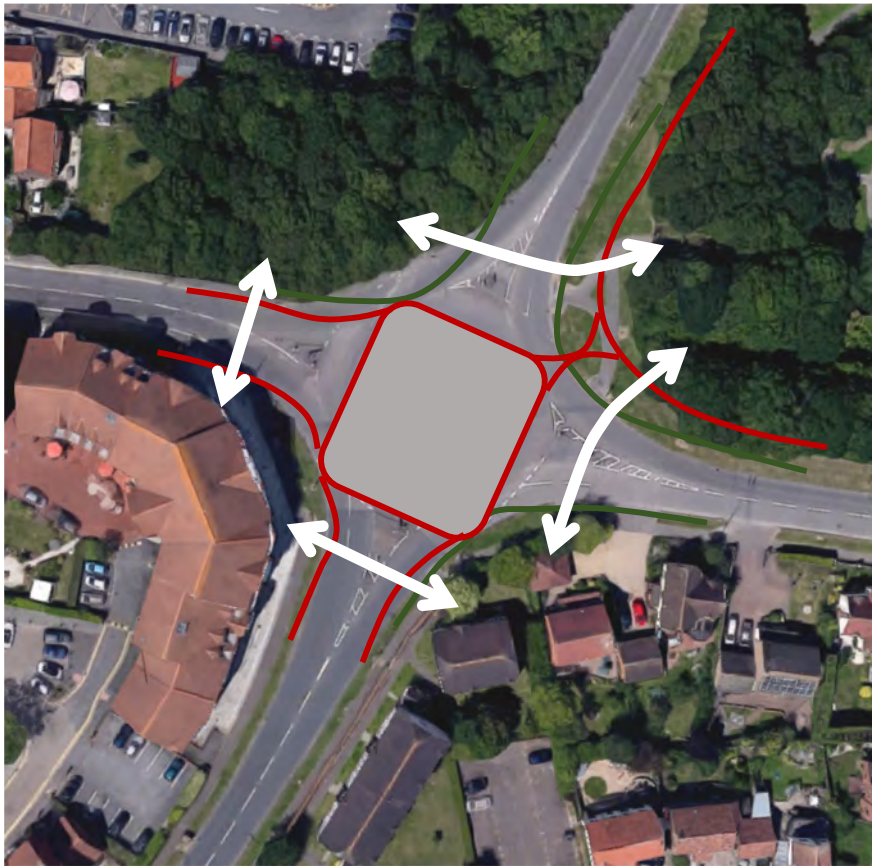
REVISED JUNCTION OPTION : DUTCH ROUNDABOUT



- Dutch style roundabout
- Road area reduced
- Segregated cycle lanes provided
- Formalised pedestrian crossing points provided

INTEGRATING WITH GREENERY

REVISED JUNCTION OPTION : SIGNALISED JUNCTION



- Signalised junction
- Road area reduced
- Segregated cycle lanes provided
- Formalised pedestrian crossing points provided

Greening the centre

Softening the public realm in the town centre with trees and planters, green walls and places to sit and relax, improving the visitor experience but also responding to flood risk.

Note: also see Town Centre ideas paper for potential interventions



INTEGRATING WITH GREENERY

GREENING THE CENTRE: EXISTING



INTEGRATING WITH GREENERY

GREENING THE CENTRE: FLOODRISK



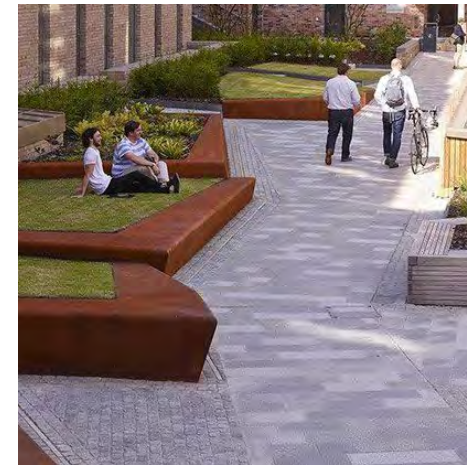
Majority of town centre
in areas of flood risk

Areas of hard surfacing
exacerbate flood risk,
including that from
surface water run-off

Introducing permeable
surfaces can help
manage the risk, and
green the town centre

INTEGRATING WITH GREENERY

GREENING THE CENTRE: EXAMPLES



INTEGRATING WITH GREENERY

GREENING THE CENTRE: INTRODUCING WATER



Urban rills and raingardens reinforcing the sense of the 'riverside country town'



INTEGRATING WITH GREENERY

GREENING THE CENTRE: TEMPORARY / TRIAL PROJECTS



Homezones and play streets

Softening the nature of the residential street and cul-de-sac, introducing greenery, reducing the impact of the car and making these a safe place to play: 'taking the park to the people'



INTEGRATING WITH GREENERY

HOMEZONES AND PLAY STREETS: EXISTING



INTEGRATING WITH GREENERY

HOMEZONES AND PLAY STREETS: EXAMPLES



Community gardens

Fostering community ownership and pride through conversion of 'grey' areas into green space for biodiversity and local food production

Note: also see Access paper for other suggested improvements to the alleyway / footpath network



INTEGRATING WITH GREENERY

COMMUNITY GARDENS: AREAS OF POTENTIAL?



Can unused / under-utilised space within the network of footpaths in the residential areas be opened up and brought into active and productive use for the community?

INTEGRATING WITH GREENERY

COMMUNITY GARDENS: EXAMPLES



Image source: Met Workshop



TROY PLANNING + DESIGN

www.troyplanning.com

LONDON
MANCHESTER
PETERSFIELD
PORTLAND

