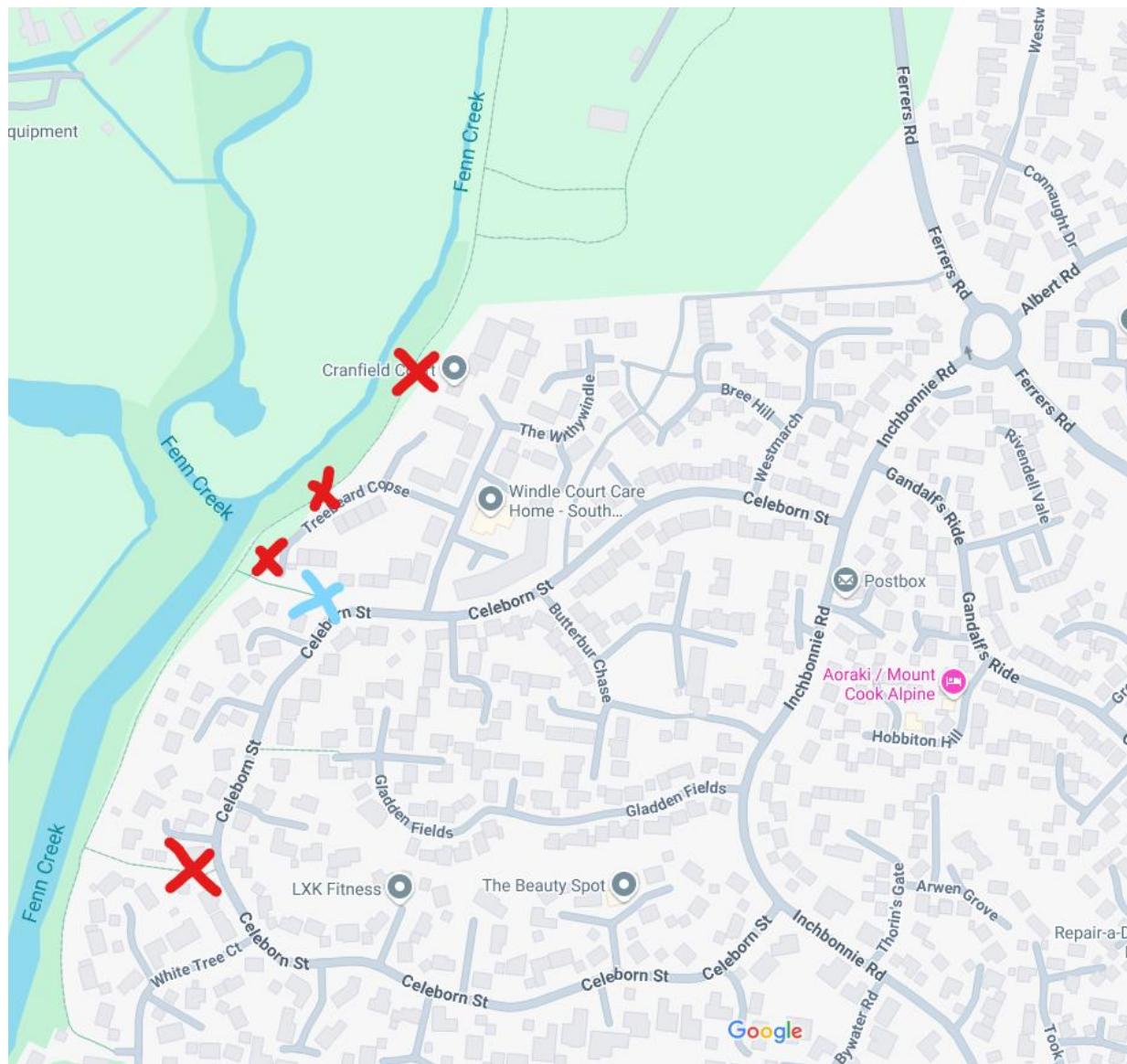




Key

Red = Access via kissing gates

Yellow = Unrestricted Access



Proposal

For southern most entrance on Celeborn, this is already overgrown/difficult access. Therefore leave as is, as only used by dog walkers

For Northern most Celeborn Access (blue). Add a kissing gate, to the path, to stop motorised bikes

For 3x red crosses on Treebeard Copse and Galadriel Spring, remove and block off paths

Access remains off Celeborn or across John Cox playing fields

Frame it as safety and maintenance consideration and able to maintain remaining routes to a higher standard



Highlighted Yellow path section is “wooded” this is used by some residents as a Dog Toilet and has significant Dog Fouling Issues

Red X (Life Buoy location), is a natural congregation point as a T junction of Paths. Where gangs of Anti-Social youths are using

Proposal

Engage with Community Police to have a presence in the area during warmer months/school holidays/evenings (7-9pm) as a deterrent

Put in a couple of Motion Capture Cameras in both areas, which will be a cheap and effective way of gathering evidence.